

IGY: RODNEY BAY MARINA

ARRIVAL & INFORMATION GUIDE



THE CARIBBEAN



Gros Islet Highway, Rodney Bay, St. Lucia WI VHF: Channel 16
T: +1 758-452-0324 F: +1 758-458-0040 RBM@igymarinas.com www.igy-rodneybay.com

WATERFRONT

F I N E D I N N I N G



& SUSHI BAR

THE EDGE, a fine dining restaurant in St. Lucia, known as the best restaurant on the island after 5 years of existence.

Caribbean Chef Of The Year 2003, Bobo Bergstrom, opened a restaurant to share and offer his unique EUROBBEAN fusion. He has earned fame in the whole of the Caribbean for his cooking style: Flavors, presentation and attention to details. It is world-class food and service that can stand up to any top restaurant in any major city.

What is most revitalizing about 'The Edge' is not just the incredible journey your palate will be treated to, but also the amazing ambiance, which has made this restaurant undoubtedly one of the most charming spots to dine. In his typical Swedish style of attention to detail and quality Chef Bobo has managed to create a very unique and stylish interior concept at 'The Edge', which also boasts the island's only Sushi Bar. A master in the culinary arts with a need to constantly surprise and raise the bar higher, Chef Bobo continue to brings his cuisine to 'The Edge'.

A dinner at The Edge will probably be the best meal you will have during your stay on the beautiful island of St. Lucia.



E U R O B B E A N

F U S I O N



the *Edge*

RESTAURANT - BBQ & SUSHI

Located at Harmony Suites Hotel • T: (758) 450 - EDGE (3343) • E: edgerestaurant@gmail.com
OPEN FOR BREAKFAST, LUNCH AND DINNER • RESERVATIONS RECOMMENDED

www.edge-restaurant.com

TABLE OF CONTENTS

Welcome	4
Marina Layout	5
Booking a Berth	8
Arrival and Departure Procedures	8,9
Important Phone Numbers/Emergency	10
Island Information	12,13
Shopping	13
Preferred Vendor List	14
The Boatyard	15
Special Events	16
About IGY	17
IGY Marina Collection	18



TOP SHELF is the yacht and villa provisioning arm of Crown Foods Limited the leading upmarket frozen foods importer in St Lucia. We are also a preferred distributor of St Lucia Distillers, purveyors of fine rums, wines and spirits. Located conveniently in IGY Rodney Bay Marina, TOP SHELF is run by Jeremy Franklin an ex charter boat skipper and self confessed foodie, oenophile and keen amateur cook.

We are your one-stop location for all your yacht and villa provisioning needs.



We stock all of the following & more...

Meat including: Certified Angus Beef, Striploin, Tenderloin, Ground Beef, Lamb Racks, Pork Tenderloins, Chicken.

Seafood including: Scottish Smoked Salmon, Scallops, Shrimp.

Also: Foie Gras, Pastries, Pork Pies, Dry Goods, Specialty Oils & more

& for your drinks cabinet...

Dom Perignon, Krug, Bollinger, Veuve Cliquot, Joseph Phelps, Beringer, Penfolds, Louis Jadot, Mouton Rothschild, Antinori Cloudy Bay and many more.

Hand-crafted Rums from St Lucia Distillers and all other spirits and beers.

Call on
VHF

Call: 1 (758) 458 4461 or 1 (758) 718 6137
email: jeremy@topshelfyachtprovisioning.com
email: info@topshelfyachtprovisioning.com
www.topshelfyachtprovisioning.com

IGY RODNEY BAY MARINA

Gros Islet Highway
Rodney Bay
St. Lucia, West Indies

Welcome!

A warm St. Lucian welcome awaits you at IGY's Rodney Bay Marina, with a staff that is committed to making your visit memorable and enjoyable. Guests can pre-register for a speedy check-in and repeat guests at IGY properties are quickly recognized.

Rodney Bay Marina is located on the northwest shore of St. Lucia, one of the most beautiful islands in the Caribbean. Well-protected from weather and winds, Rodney Bay Marina has long provided secure berthing through all weather conditions. Martinique is just 21 miles to the north and the Grenadines provide spectacular cruising to the south.

As an official port of entry to St. Lucia, Rodney Bay Marina offers an on-site customs and immigration office. Yachts arriving from foreign ports can clear in and out of St. Lucia from its designated berth at the Rodney Bay Marina.

You will quickly make friends with your fellow cruisers. We have a distinctly international clientele, with regular visitors from the Americas, Europe and elsewhere. The bars and restaurants on site provide casual settings for fun and relaxation. Additionally, we offer periodic barbecues and cocktail receptions for our guests.

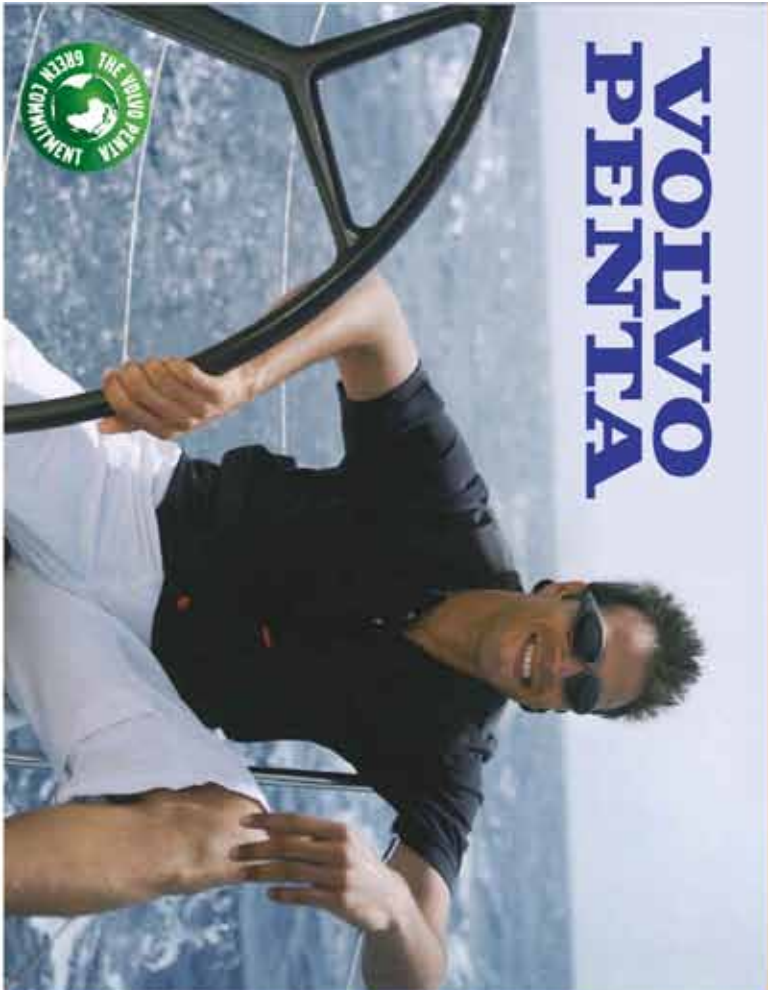
All of this makes Rodney Bay Marina not just another berth, but truly a "home away from home" for visiting yachts. If there is anything that we can do to make your stay with us more memorable and relaxing please do not hesitate to ask.

Sincerely,
Adam Foster
General Manager
afoster@igyminas.com





VOLVO PENTA



The new D series sailboat engines from 12 to 180 hp are specifically developed for sailors. Available for every engine is a full range of propellers and accessories - also made for sailors. Plus service from the broadest dealer network in the market.

- D series for sailors: Clean. Quiet. Powerful.**
- High torque at low revs for easy manoeuvring.
 - Powerful charging with 11.5A alternator and built-in charging sensor.
 - Low emissions and low noise for great comfort.
 - Possibility to show engine data in chart plotter.
 - Smart and flexible instrumentation.
 - Proven reliability from robust design.

25% discount on sailboat D1 - D4 range when you bring in your old engine!

(valid until 31 jan 2011)

DO YOU LOVE YOUR BOAT? MAYBE YOU SHOULD CONSIDER RE-POWER!

The Benefits of Re-Power

- Power and performance
- Improved fuel consumption
- Reduced emissions

Call your Caribbean Volvo Penta Dealer today to discuss the options to re-power your boat

Inboard Diesel Service

Port Chase Yacht - Martinique - FWI
Tel: +59656787196
frank@inboarddiesel.com
www.inboarddiesel.com

Martinik

Roadney Bay - St Lucia
Egbert Charua
Tel: (1758) 484 60 31
martinik@gmail.com
www.martinikstlucia.biz

Grenada Marine

Stefan Fletcher
St David, Grenada
Tel: 473 443 1667
info@grenadamarine.com
www.grenadamarine.com



D1 - D2
13HP - 76HP



INBOARD
D3 - D4
110HP - 180HP

www.volvopenta.com

KEY IGY MARINA TEAM

Adam Foster

General Manager
+1 758-452-0324
afoster@igymarinas.com

Portia Mogal

Marketing, Sales & Events Manager
+1 758-724-7609
pmogal@igymarinas.com

Pet Antoine

Marina Office
+1 758-452-0324
pantoine@igymarinas.com

Kenneth Mathurin

Marina Broker
+1 758-720-3256
kmathurin@igymarinas.com

Natalie Marcel

Marina Office
+1 758-452-0324
nmarcel@igymarinas.com

For **reservations** please contact Natalie Marcel.

CUSTOMER FEEDBACK FORM

Island Global Yachting is committed to providing superior customer service and we welcome all feedback. Please find printed survey's in the marina office, or alternatively please visit our website at www.igymarinas.com and click on the feedback forum.



Advance reservations are strongly recommended at Rodney Bay Marina and we cannot guarantee available berthing for guests arriving without a reservation. We also ask that you provide advance notice, where feasible, of your approximate arrival time so that we can be fully prepared for your arrival and minimize any inconvenience to you.

Upon arrival at the marina, you will be met at your slip by our dock attendants to guide you in and assist you with docking. Once you are comfortably settled into your slip, we ask that you visit our marina office in order to check in. Our office staff will quickly register you and answer any questions that you may have about Rodney Bay Marina and St. Lucia, including assistance in arranging your entertainment and activities on land.

Check In/Out Times

Check-in time is at 8:00am eastern, while check out time is at 12:00pm

If you are arriving after office hours please contact Rodney Bay Security on VHF Channel 16 for assistance.

ARRIVAL & DEPARTURE PROCEDURES

In order to clear into Rodney Bay Marina, the immigration officer will need the following:

- Copy of passenger and crew list (*4)
- Passports of all crew and guest
- Clearance form from last port
- A copy of the ship's registry

A Caribbean pre-arrival notification system is at www.eSEACLEAR.com and has a list of participating countries.

The Immigration, Customs and St. Lucia Air & Sea Ports Authority are housed in the same unit, making it a one-stop shop. The clearance is valid for 72 hours.

Port Offices

Customs & Excise Dept	+1 758 452 0235
Customs & Excise Dept (Main Office Castries)	+1 758 468 4800
Immigration & Seaport Authority	+1 758 452 0548

IMMIGRATION & CUSTOMS

Visitors must carry a valid passport except citizens of the United States of America and Canada, who may enter St. Lucia with adequate proof of citizenship (a birth certificate or a photo ID, e.g. driver's license).

Citizens of the Organization of Eastern Caribbean States (OECS) may enter with their driver's license, identification card or passport.

Visitors from all other Commonwealth countries require a valid passport. Visas are not required for the citizens of those countries, however they are issued an immigration form, which is valid (when completed) for a period of stay of up to six months. Visitors from other countries should please check if a visa is required.

Upon arrival, you will be given a date stamp in your passport and immigration form. If you need to stay longer than the time specified on your documents, you may apply for an extension at the emigration department at the Police Headquarters in Castries. Without exception, you will need an onward or round-trip ticket and proof of sufficient funds for your stay.

It is important to note that overstaying without permission from the local authorities is an offence, including taking any form of paid employment without a work permit.

Our staff will then process the forms through the appropriate government agencies. Please call the marina office to arrange for this service and to confirm pricing.

Some of our guests elect to use a port agent in the Caribbean to assist with the paperwork and procedures involved in clearing in and out of the territory. Rodney Bay Marina is pleased to work with the port agent of your choice. If you are in need of one for St. Lucia, BWA Caribbean, an independent company, is our preferred provider for port agency services and can be reached at +599 544 2436 or www.bwayachting.com.

CUSTOMS & IMMIGRATION CLEARANCE

In order to clear out of St. Lucia, you will need the following:

- Passenger and crew list (*4)
- Copy of clearance declaration
- Passports
- A copy of the ship's registry

CHECKING OUT OF RODNEY BAY MARINA

Our office staff is dedicated to making your departure experience from Rodney Bay Marina fast and hassle-free. Please visit the marina office on the day of your departure to obtain your account balance and pay before leaving. Although a statement of your account can be generated while you wait, it will be most efficient if you provide us with advance notice of the time of your departure so that the bill can be prepared.

Rodney Bay Marina happily accepts American Express, Master Card and Visa for payment of bills, as well as cash and personal checks.

Office Hours

Weekdays: 8:00am – 5:00pm

Saturday and Sunday 8:00am - 4:00pm

PET POLICY

An application form requesting a permit must be completed and approved by the Veterinary Office prior to arrival.

Outlined below are the steps for this procedure:

- Visit www.maff.gov.lc and scroll down to the picture display and select the picture with the “goats”
- Under the “veterinary & livestock” menu bar on the left, click “guidelines for importing”
- In the list of animals and products below, select “importation of dogs & cats”

- After reading these guidelines, under the same “veterinary & livestock” menu bar, select “permits” then click on the “application for veterinary import permit”

Fill out the form, sign and print/scan and fax it to us at +758 458 0040 or email kmathurin@igymarinas.com.

PERSONAL DELIVERIES

During your stay with us, you can use the following address for receiving any mail, packages, or containers. Please note that we charge a small fee for this service.

Vessel Name c/o Captain or
Crew Member Name
Rodney Bay Marina
Gros Islet Highway, Rodney Bay
Gros Islet, St. Lucia West Indies

If the customer DOES NOT wish to use a courier and would like to use the regular postal system they can use the following postal information:

Boat Name c/o Owner/ Captain
Rodney Bay Marina
P.O. Box 1538
Castries, St.Lucia W.I.

Johnsons Hardware Ltd.



**• Marine • Hardware • Electrical
& so much more...**

Tel: 1 (758) 452 0299 • Fax: 1 (758) 452 0311
www.johnsons-hardware.com • Rodney Bay, St. Lucia



Medical Emergencies

Ambulance/Fire/Police 999 or 911

Medical Centers

There are five medical facilities in St. Lucia. The main hospital is Victoria Hospital; however most visitors take advantage of in-house doctors available through many hotels and resorts throughout the island. For any questions or recommendations please contact the marina office and we'll be happy to assist you.

Victoria Hospital	+1 758-452-2421
Rodney Bay Medical Centre	+1 758-453-6582
IHC Medical Clinic, Rodney Bay	+1 758-453-6582
Tapion Hospital, La Toc	+1 758-459-2000
Gros-Islet Poly Clinic	+1 758-450-9661

Dentists

Rodney Bay Dental Centre	+1 758-458-0167
Sunshine Dental, Sunny Acres	+1 758-453-7697

Drug Stores

M & C Drug Store, JQ's Mall	+1 758-458-8153
R J Clarke Drug Store	+1 758-456-0361
Julian's Pharmacy	+1 758-458-4992

Gros Islet Police Station	+1 758-456-3832
Marine Unit	+1 758-456-3860
Fire Station	+1 758-450-9009
Ambulance	+1 758-450-9111
Disaster Preparedness-HQ	+1 758-452-3802
Special Services Unit	+1 758-456-3973
Operator Assistance	411

USEFUL INFORMATION**VHF Radio Contact Information**

Rodney Bay Marina VHF Channel 16

Courier Services

Fed Ex (located on site) +1 758-452-9404

BUSINESS CENTER

As a full-service destination marina, guests can access a variety of business services available on site at Rodney Bay Marina to meet your distinctive needs.

TELECOMMUNICATIONS

Cable & Wireless +1 758 453 9501

ENVIRONMENTAL AWARENESS

IGY and Rodney Bay Marina are fully committed to preserving the beautiful environment that attracts our guests to the Caribbean. We ask that you help us to ensure that our land and waters remain clean and safe. We have adopted some marina regulations activities and hope that you will agree to help us preserve the environment for future boaters.

- We have preserved the mangroves that line our shore as a barrier to erosion and as a key breeding ground for fish. Please do not do anything that might damage these important bushes. In particular, we ask that you not cut or break the mangrove branches.
- We have garbage receptacles strategically located around the marina property and the docks. Please use these receptacles for your trash, and please do not dispose of any (including food waste and other organic matter) into the water.
- We ask that you not undertake any work in the marina, which could cause the release of pollutants into the environment. For this reason, sanding, painting and similar activities should be done in a controlled area and generally, should not be undertaken in the marina.
- Discharge of septic systems, fuel, toxic cleaning agents and other pollutants into the water in the marina is a violation of both our marina rules and US law. It is strictly prohibited.
- ALL used oil, black water, and grey water removal must be done through the marina office in order to ensure safe and environmentally friendly removal and disposal. Please contact the marina office to schedule waste oil, black or grey water removal, and for the most up-to-date pricing.
- Because the improper delivery of fuel, oil and lubricants also can cause pollution, delivery of any of the above products that have not been ordered through the marina office will not be allowed on the property.

We would be most appreciative if you would immediately contact the marina office if you see any violations of these rules.

FUEL, OIL AND LUBRICANT

Please note that all fuel, oil, and lubricant orders must be made through the marina office. Delivery of any of the above products that have not been ordered through the marina office will not be allowed on the property.

 IGY: RODNEY BAY MARINA

CUSTOMS BROKERAGE

- **IMPORT**
- **EXPORT**
- **CUSTOMS CLEARANCE**
- **COURIER SERVICES**

"For all your National and International Shipping needs"

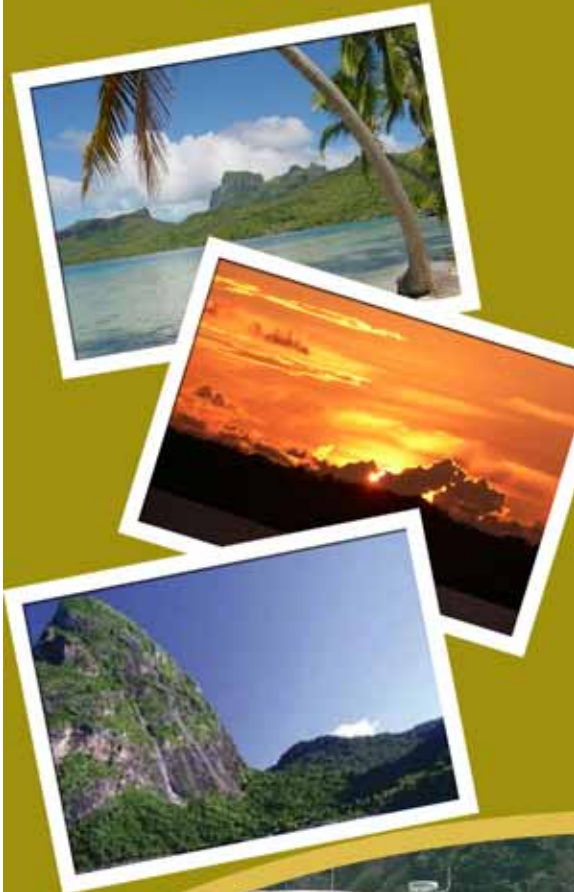
Kenneth Mauthrin
Customs Broker
IGY Rodney Bay Marina

T 1 758 452 8956
 F 1 758 452 0185
 C 1 758 720 3256

kmathurin@igymarinas.com
www.igyrodneybay.com



*Enjoy a day at sea
 on your own private
 charter.*



charter@hiycci.com
 Phone: (758) 484 4924
 Website: www.hiycci.com

Capital: Castries
 Main Towns: Gros-Islet, Sofriere, & Vieux Fort
 Population: 160,000
 Currency: Eastern Caribbean Dollar
 Exchange Rate: fixed rate of US \$1.00=EC\$2.70
 Departure Tax: EC \$68.00 (included in ticket cost)

CLIMATE

The climate in St. Lucia is mild and year-round, with a rainy season between June and November.

LANGUAGES

The official language is English, although Creole is spoken in informal situations.

GEOGRAPHY

St. Lucia is 27 miles long and 14 miles wide with a total area of 238 square miles. The island is located at 14 04'32.72" North Latitude and 60 56' 55.63" West Longitude. Martinique lies 21 miles to the north and St. Vincent is 26 miles south.

GOVERNMENT

St. Lucia is an independent nation since 1979 and is a member of the British Commonwealth under a Parliamentary system as a Prime Minister as head.

TIME ZONE

St. Lucia is located within the Atlantic Standard Time Zone, which is 4 hours behind London (GMT) and 1 hour ahead of New York (except during the daylight savings months in the USA when it is the same time.)

TOURISM INFORMATION

St. Lucia Tourist Board Main Office
 +1 758 452 4094
 St. Lucia Hotel and Tourism Association
 +1 758 452 5978

COMMUNICATIONS

Cable & Wireless
 +1 758 453 9501

CURRENCY & EXCHANGE

The best place to exchange foreign currency into EC for St. Lucia is the bank, credit cards are widely accepted, and ATM's are widely accessible. Banks are located in Rodney Bay, Castries, Vieux Fort, Gros Islet, and Soufriere. Banks are generally open Monday through Thursday 8:00am-2:00pm, and until 5:00pm on Fridays. Banks located at the airports are the only ones open on Sundays.

Please note that most of the banks have several outlets except for RBTT bank, which can only be found in the William Peter Boulevard in Castries.

Currency: Eastern Caribbean Dollar
 Exchange rate: Fixed rate of US\$1.00 = EC\$2.70

Banks nearby Rodney Bay Marina

First Caribbean International Bank	+1 758 452 9384
Royal Bank of Canada	+1 758 452 9921

Currency Exchange Banks

Bank of St Lucia Ltd 1 Bridge St, Box 1860	+1 758 456 6000
First National Bank of St. Lucia	+1 758 452 8882

ARRIVING BY AIR

St. Lucia has two airports; Hewanorra International Airport (UVF) is located in Vieux Fort, and George FL Charles Airport (SLU), which is a smaller airport located in Castries approximately 15 minutes from Rodney Bay Marina. It also has direct air service to Puerto Rico and other Caribbean Islands.

We are a one-hour drive or a short helicopter ride from Hewanorra International Airport at Vieux Fort. We strongly suggest making reservations prior to your arrival for the helicopter. The marina office can assist in booking one.

Hewanorra International Airport

Air Traffic Controller +1 758 454 6111

AIRLINES

Air Canada	+1 758 454 6038
Air Caraibes	+1 758 452 2348
Air France	+1 758 458 8282
American Airlines/Eagle	+1 758 454 6777
British Airways	+1 758 452 3951
Delta Airlines	+1 758 454 5594
LIAT	+1 758 452 3056
US Airways	1 800 622 1015
Virgin Atlantic	+1 758 454 3610

ISLAND INFORMATION

St. Lucia Helicopters R2 +1 758 453 6950

Airport shuttles, scenic tours, photography flights, private charter (6 people). Advanced reservations are required.

George FL Charles +1 758 452 2426
Air Traffic Controller

Travel Agencies

Carib Travel Agency +1 758 452 2151

Hibiscus Travel Agency +1 758 453 1527

International Travel Consultants +1 758 452 3131

Solar Tours +1 758 452 5898

KRM Tours +1 758 458 4021

Monrose Group +1 758 452 3131

TAXI INFORMATION

Visitors can take full advantage of the many travel options on the island of St. Lucia. Obtaining taxis is relatively easy, and fares are often negotiable.

Rodney Bay Taxi +1 758 452 9957

AUTO RENTAL

The marina office is also happy to assist with any car rental needs. Drivers must have a temporary driver's permit to drive in St. Lucia, which can be obtained from the Immigration Office at Hewanorra Airport, Gros Islet Police Station, and all major car rental agencies. All driving is done on the left side of the road in St. Lucia.

Cool Breeze +1 758 458 0824

Vacation & Corporate Rental +1 758 452 9404

St. Lucia National Car Rental Services Ltd. +1 758 450 8721

Hertz

Hewanorra Int'l Airport +1 758 454 9636

George FL Charles Airport +1 758 451 7351

Head Office +1 758 452 9887

Budget Rent-A-Car

Hewanorra Int'l Airport +1 758 454 7470

Head Office +1 758 452 9887

SHOPPING

Local shops are generally open weekdays, 8:30am to 4:00pm and on Saturday 8:00am to 12pm. There are a wide variety of shopping experiences from Castries market, where local crafts are available, to Pointe Seraphine and La Place Carenage, which has two duty-free shopping centers (also in Castries). A variety of shopping malls with extended opening hours offer a wide selection of boutiques and restaurants. Most hotels have boutiques and vendors' markets. The following are on-site businesses are located in Rodney Bay.

Arc Dynamic +1 758 384 0665

BBC Yachting +1 758 716 7610

Bluefish Glass +1 758 716 4300

L'Essence Massage +1 758 485 1616

Bosun's Bar & Bistro +1 758 458 4190

Bread Basket +1 758 452 0647

Bryden's Liquor +1 758 458 8645

Café Ole +1 758 452 8726

Caribbean Fresh Magazine +1 758 716 1021

Caribbean Yachting +1 758 458 4430

Destination St. Lucia Charters +1 758 452 8531

Drop Anchor Clothing +1 758 452 3647

Flower Shack Florist +1 758 452 0555

G's Marina Mart +1 758 450 0331

Island Water World +1 758 452 1222

The Italian Corner +1 758 518 2900

KL Marine +1 758 450 5565

Philip Brown Mechanical Repairs +1 758 452 0548

Regis Electronics & Repairs +1 758 452 0205

Rodney Bay Taxi +1 758 452 9957

Rodney Bay Sails +1 758 452 8648

H2O Restaurant +1 758 452 8648

Scribble Designs Studio +1 758 452 0224

Seaspray Cruises +1 758 452 8644

Soothing Touch Massage +1 758 284 4606

Starfish Deli/Sushi +1 758 715 1577

Sud's Laundry +1 758 486 0718

Top Shelf +1 758 458 4661

Vacation & Corporate Car Rental/ Internet Cafe +1 758 452 0732

Wave Riders Ltd +1 758 452 0808

PREFERRED VENDOR LIST

For your convenience, our list of preferred vendors located in the area cater to a variety of needs including chandleries and provisioning.

MAINTENANCE

While Rodney Bay Marina has a full-service boatyard, here are a few local maintenance shops in St. Lucia for your reference.

Arc Dynamic Machine Shop +1 758 384 0665

Lucelac Utilities +1 758 457 4440

Fiber Lab +1 758 721 0272

Island Water World Chandlery +1 758 452 1222

Mermaid Repairs	+1 758
Phillip Brown Mechanical Repairs	+1 758 452 0548
Quick & Reliable Mechanical Services	+1 758 584 6544
Regis Electronic Repairs	+1 758 452 0205

PREFERRED VENDOR LIST CONT'

Sail Loft Sail Repairs	+1 758 452 8648
------------------------	-----------------

PROVISIONING

Bryden's Liquor	+1 758 458 8645
Flower Shack	+1 758 452 0555
G's Marina Mart Groceries	+1 758 450 0331
Sud's Laundry	+1 758 486 0718
BWA Yachting	599 544 2436
Starfish Deli/Sushi	+1 758 715 1577
Top Shelf	+1 758 458 4661

AREA ATTRACTIONS

The Rodney Bay Marina office is happy to arrange any activities during your stay. Here are some of our favorites:

Rain Forest Sky Rides Aerial Tram and Tranopy Tours	+1 758 458 5151
Tree Top Adventures Park	+1 758 453 4952
Balao Ltd Ferry Tours	+1 758 452 0808
Destination St. Lucia Tours Yacht Charters	+1 758 452 8531
Caribbean Yacht Charters	+1 758 458 4430
Hoof Print Horse Riding Ranch	+1 758 520 5102
ATV Tours	+1 758 455 3245
Mountain Biking	+1 758 457 1400
Dive Fair Helen Scuba Diving Sites	+1 758 451 7716
Seaspray Cruises	+1 758 452 8644
St. Lucia Golf Club	+1 758 450 8523
Kite surfing and Wind surfing (Vieux Fort)	+1 758 454 3418
Parasailing at St. Lucia Resort	+1 758 452 8351
St. Lucia Racquet Club	+1 758 450 0551

DINING & ENTERTAINMENT

SPAS

Soothing Touch	+1 758 284 4606
Becar Corp	+1 758 485 1616

BEACHES

Magen's Bay, Morning Star, Lindberg Bay, Sapphire Beach, Coki Beach, Linquest Beach, Hull Bay, Bolongo Bay, Emerald Beach, Limetree, Brewer's Bay, Secret Harbor, Vessup Bay.

DINING & ENTERTAINMENT

As well as on-site cafes, restaurants & bars, you may want to venture into the busy nightlife of Rodney Bay village where you will find a huge variety of cuisine and entertainment.

Our local favorites include Fire Grill, Big Chef, The Edge, Spinnakers and Ku De Ta for food, and Delirious, Rehab & Happy Day Bar for drinks. Try Gros Islet on a Friday evening where tourists & locals mix for local Fish Fry. Ask any of our staff for recommendations and we'd be happy to come up with some great suggestions as well as make any arrangements or reservations that you may require.

Below you will find restaurants conveniently located on-site:

Bosun's Bar & Bistro	+1 758 458 4190
Breadbasket	+1 758 452 0647
Café Ole	+1 758 452 8726
The Italian Corner	+1 758 518 2900
Starfish Deli/Sushi	+1 758 715 1577

RODNEY BAY MARINA BOATYARD

Located at the Rodney Bay Marina, the boatyard has all the necessary and crucial capabilities to care for your vessel inside and out.

Boatyard Services

- Fuel, oil, water and ice services
- Portable and fixed pump-out facilities
- Boat repair management
- Vessel caretaking
- Antifouling & detailing
- Fiberglass repairs & spray painting
- Sail, rigging and osmosis Repairs
- Fabrication and welding services
- Teak deck installations
- Electrical services
- Mechanical services
- Water maker services
- Propeller and shaft repairs
- Selden mast repairs

Boatyard Capabilities


- 75-ton Marine Travelift
- 40-ton Transporter
- Carpentry
- Electronics
- Yamaha and Mercury Outboard dealers
- Yanmar dealership
- Volvo Penta dealership
- North Sails representatives
- Chandlery
- Hurricane storage

CREATE YOUR OWN UNFORGETTABLE DAY AT SEA!

EXODUS

BOAT CHARTERS

- Deep Sea Fishing • Snorkeling
- Sunset Cruise • Sightseeing
- Whale & Dolphin Watching



CAPTAIN TOM - Managing Director
Tel: 1 (758) 485 3966
Email: exodusstlucia@gmail.com
WWW.EXODUSSTLUCIA.COM



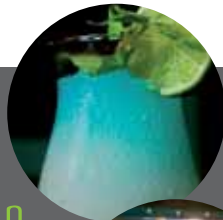
the good
food mood

delirius
bar
seafood
restaurant
provisioning

come to
delirius
to dine on
delicious
seafood,
drink divine
cocktails
& dance
till dawn

& for
all your
provisioning
needs we'll
deliver to
your door
or dock

meet alva,
caribbean
bartender
of the year



telephone 1 (758)451 deli (3354)
rodney bay village • st. lucia
info@deliriusstlucia.com
www.deliriusstlucia.com

St. Lucia Jazz Festival is held annually in May. It has become one of the major and most anticipated events on St. Lucia and the Caribbean's calendar of events. During the month of May, the island dances when music fills the air and tourism takes on a whole new meaning to all. What started as simply a marketing event to boost the tourism industry arrivals during a low period, has transformed into one of the premiere jazz musical treats of the world. For more information please visit www.stlucijazz.org

The St. Lucia Carnival is held each year in July. This Parade brings to a climax the celebration of St. Lucian Carnival. Titles such as Carnival Queen, Calypso Monarch, Panorama Champions, Party Monarch, among others will have already been decided. On these days revelers take to the streets in a bouillon of color and music as each band strives to capture the coveted title of "Band of the Year". For more information please go to: www.stlucia.org Portia, this paragraph is a little confusing, and I'm afraid that if I make changes, I will make a mistake – can you please correct it?

The St. Lucia International Billfish Tournament is held in September, gathering over 100 anglers from throughout the Caribbean and the US. The tournament features activities on and off the water. For more information please visit www.stlucia.org.

Atlantic Rally for Cruisers (ARC) takes place from late November through the end of December. The ARC is an annual transatlantic sailing competition for racer and cruiser yachts since 1986. ARC starts at the end of November in Las Palmas de Gran Canaria and ends before Christmas in the Caribbean destination Rodney Bay Marina on Saint Lucia. For more information please visit www.stlucia.org.

ABOUT IGY

Island Global Yachting (IGY) is the leading luxury marina and yachting lifestyle development and operations company. With an unrivaled international network of marinas in the most sought-after locations, extensive expertise across a variety of disciplines and a unique focus on hospitality, IGY is dedicated to developing and operating the finest yachting destinations worldwide.

Committed to developing more than a series of unforgettable marinas and yachting lifestyle developments, IGY strives to create a sense of place for owners, crew and visitors alike, while providing capabilities and solutions in every area of marina development and operations. With insight and attention to detail, IGY crafts a collection of experiences, memories and venues where the sensation of coming ashore is as exciting as the open sea.

Established in 2005, IGY is presently developing and operating venues in over 10 countries. Simply, IGY is the leading yachting resort and marina brand in the world.

For more information on IGY and our global collection of marina destinations, please visit us or call at: www.igymarinas.com, 1-888-IGY-MARINAS.

IGY MARINAS

AMERICAS

NEW YORK HARBOR

Newport Yacht Club & Marina

NEW YORK

Montauk Yacht Club Resort & Marina

BOSTON

Boston Yacht Haven

MEXICO

Marina Cabo San Lucas

CARIBBEAN

ST. LUCIA

*Rodney Bay Marina

ST. MAARTEN

Simpson Bay Marina

*The Yacht Club at Isle de Sol

ST. THOMAS

American Yacht Harbor

*Yacht Haven Grande St Thomas

COLOMBIA

Marina Santa Marta

PUERTO RICO

Palmas del Mar Yacht Club

MIDDLE EAST

DUBAI FESTIVAL CITY

Festival Marina

*= Indicates member of the Yacht Haven Grande Collection, representing the finest megayacht marinas in the world.



As you continue your journey, we invite you to experience all the other IGY marina destinations throughout the Caribbean, Americas, Europe and the Middle East.

CARIBBEAN

**Yacht Haven Grande
St Thomas, USVI**
P +1 340-774-9500
F +1 340-774-5045
marina@yachthavengrande.com
VHF: 16/10
Total Number of Berths: 46
Megayacht Berths: 46
Berthing Type: Side-to
Max Length/Draft: 200+m/5.5m

**Rodney Bay Marina
St. Lucia, WI**
P +1 758-452-0324
F +1 758-458-0040
RBM@igymarinas.com
VHF: 16
Total Number of Berths: 253
Megayacht Berths: 32
Berthing Type: Side-to
Max Length/Draft: 87m/4m

**Yacht Club at Isle de Sol
St. Maarten, NA**
P +1 599-544-2408
F +1 599-544-2906
IDS@igymarinas.com
VHF: 78A/16
Total Number of Berths: 45
Megayacht Berths: 45
Berthing Type: Side-to
Max Length/Draft: 115m/6.5m

**American Yacht Harbor
St Thomas, USVI**
P +1 340-775-6454
F +1 340-776-5970
AYH@igymarinas.com
VHF: 16/6
Total Number of Berths: 135
Megayacht Berths: 4
Berthing Type: Side-to & Stern-to
Max Length/Draft: 33.54m/3m

**Marina Santa Marta
Santa Marta, Colombia**
P +1 575-421-5037
F +1 575-423-5995
npycmarina@igymarinas.com
VHF: ?
Total Number of Berths: 256
Megayacht Berths: 5
Berthing Type: Side-to
Max Length/Draft: 40m/3.5m

**Simpson Bay Marina
St. Maarten, NA**
P +1 599-544-2309
F +1 599-544-3378
SB@igymarinas.com
VHF: 79A/16
Total Number of Berths: 114
Megayacht Berths: 20
Berthing Type: Side-to & Stern-to
Max Length/Draft: 60m/4m

CARIBBEAN (CONT.)

**Palmas del Mar Yacht Club
Humacao, Puerto Rico**
P +787 285 2700
F +787 656 9111
info@palmasdelmaryachtclub.com
Total Number of Berths: 158
Megayacht Berths: 44
Berthing type:

AMERICAS

**Marina Cabo San Lucas
Cabo San Lucas, Mexico**
P +52 624 173 91 40
F +52 624 14 312 53
CSL@igymarinas.com
VHF: 88A
Total Number of Berths: 380
Megayacht Berths: 33
Berthing Type: Side-to & Stern-to
Max Length/Draft: 61m/7m

**Montauk Yacht Club
Montauk, NY USA**
P +1 631-668-3100
F +1 631-668-7728
dockmaster@montaukyachtclub.com / VHF: 09
Total Number of Berths: 232
Megayacht Berths: 27
Berthing Type: Side-to
Max Length/Draft: 84m/4m

AMERICAS (CONT.)

**Newport Yacht Club & Marina
New York Harbor, USA**
P +1 201 626 5550
F +1 201 626 5558
npycmarina@igymarinas.com
VHF: 16/72
Total Number of Berths: 154
Megayacht Berths: 12
Berthing Type: Side-to Max
Length/Draft: 50m/2.7m

**Boston Yacht Haven
Boston, MA USA**
P +1 617 367 5050
F +1 617 523 2270
info@thebostonyachthaven.com
VHF: 09/16
Total Number of Berths: 100
Megayacht Berths: 15
Berthing Type: Side-to, Stern-to
Max Length/Draft: 91m/6m

MIDDLE EAST

**Festival Marina
Dubai, UAE**
P +971 4 208 5100
F +971 4 232 9317
marina@dubaifestivalcity.com
VHF: 16
Total Number of Berths: 98
Megayacht Berths: 12
Berthing Type: Side-to & Stern-to
Max Length/Draft: 40m/4.5m